

Armor™ Inspection and Maintenance Procedure

Fontaine recommends that preventive maintenance be performed after 90 days or 750 hours, whichever comes first and every 90 days or 750 hours thereafter.

Note: PM intervals are recommended based on standard duty applications. Applications more severe than standard duty may require different PM intervals to ensure peak performance.

Inspection

Using a suitable solvent, degrease the fifth wheel and mounting bracket to inspect for:

1. Loose nuts and bolts in the fifth wheel and mounting hardware.
2. Securely fastened and properly working springs.
3. Check to see if both bracket pins are in place and secured by cotter pin or roll pin.
4. Rock the fifth wheel front to back checking for interferences.
5. Check for air leaks in the cylinder and supply line.
6. Cracks in the fifth wheel assembly, mounting brackets, and mounting parts.
7. Wear and/or damage to moving parts.

Note: If any discrepancies are found matching 1-3, note and solve the issue. If any discrepancies are found matching 4-7, note the issue and contact Fontaine.

PM Lubrication

Tilt the top plate forward (front of the fifth wheel down) and apply grease to each bearing area through the zerk fitting. Armor has zerk fittings location under the skirt of the top plate on the front of the bracket pocket (see Figure 1). Continue to apply grease until it is coming out of the back of the bearing. A substantial amount of grease may be required initially to fill the reservoir. Tilt the wheel to the rear (rear of the wheel down) and repeat the procedure. Rock the top plate back and forth several times to spread the grease over the bearing surface.

Inspect the top surface of the fifth wheel to make sure it is properly greased. A liberal coating of grease



Figure 1: Underside view, Lubrication points of Fontaine Armor

should be applied to the complete surface of the top plate of the fifth wheel (see Figure 2). A paddle or brush can be used as a possible tool.

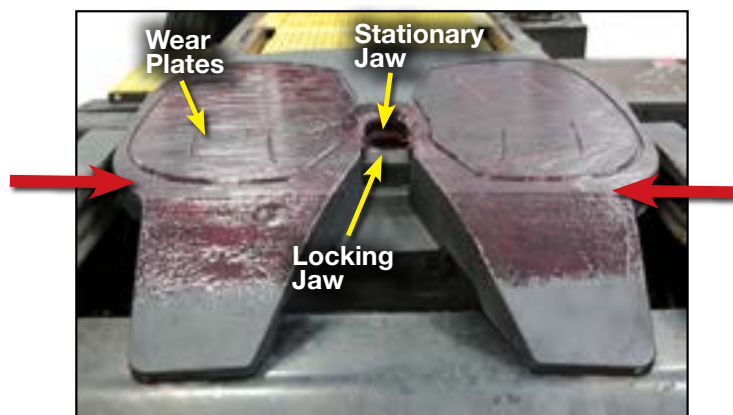


Figure 2: Top view, lubrication points of Fontaine Armor

(Continues next page)

Note: Too much grease in the lock mechanism can prevent the proper operation of the fifth wheel and can cause a dangerous condition.

Lubricate the fifth wheel prior to opening and closing. Grease the jaw in the area that makes contact with the kingpin and the rear sliding surface (see Figure 2).

Fontaine suggested the use of a Moly based lubricant such as Mobilegrease XHP320 or equivalent when applying lubricant to the locking jaw.

Areas or regions that experience extreme and/or prolonged freezing temperatures should consider using a less viscous substance. Fontaine suggests contacting your specific lubricant manufacturer to guidelines on mixing compatibility of any lubricant). In cold weather applications, please refer to Cold Weather technical bulletin [\(TB-064\)](#).

Technical Bulletins are available at www.fifthwheel.com/armor -- Choose "Literature" tab.

PM Operation Check

Operate the Fontaine Armor yard truck fifth wheel by cycling the air cylinder with the fifth wheel switch located in the cab of the yard truck.

To open, hold the valve open until the locking mechanism is locked in the open position. If your truck is equipped with the optional fifth wheel interlock, set the trailer brakes before cycling the fifth wheel.

Close the Fontaine Armor using the test kingpin (Fontaine Parts Connection parts number ARMORKPK). Repeat several times making sure that all moving parts have adequate lubrication.

If an issues will the operation is found, please contact Fontaine customer service.

Note: The knockout rod requires no adjustment and is used to release a tight jaw by tapping the rod with a hammer (see Figure 3).

FIGURE 3: Knock-out rod

