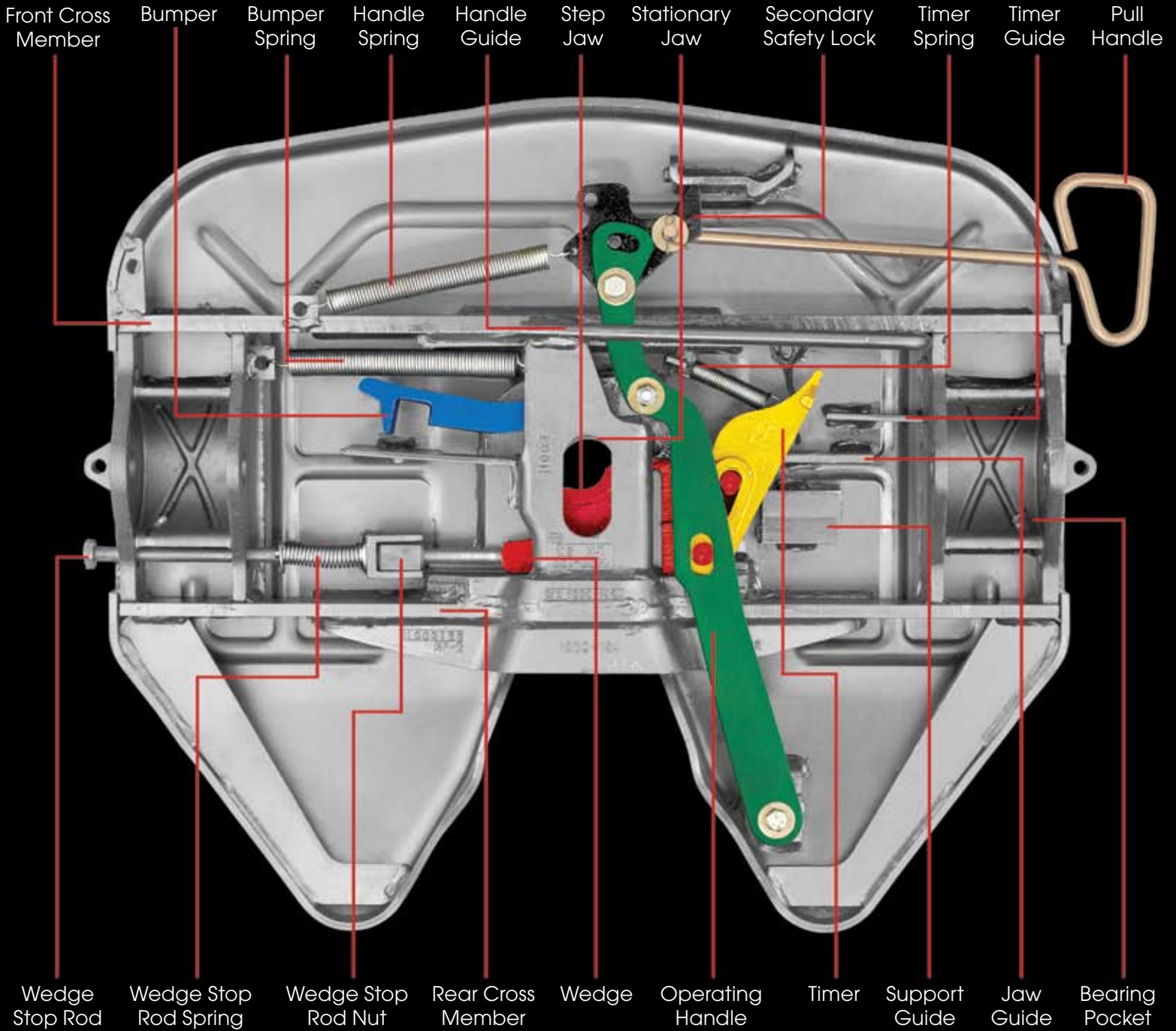


No Slack® II 6000 Series Top Plate

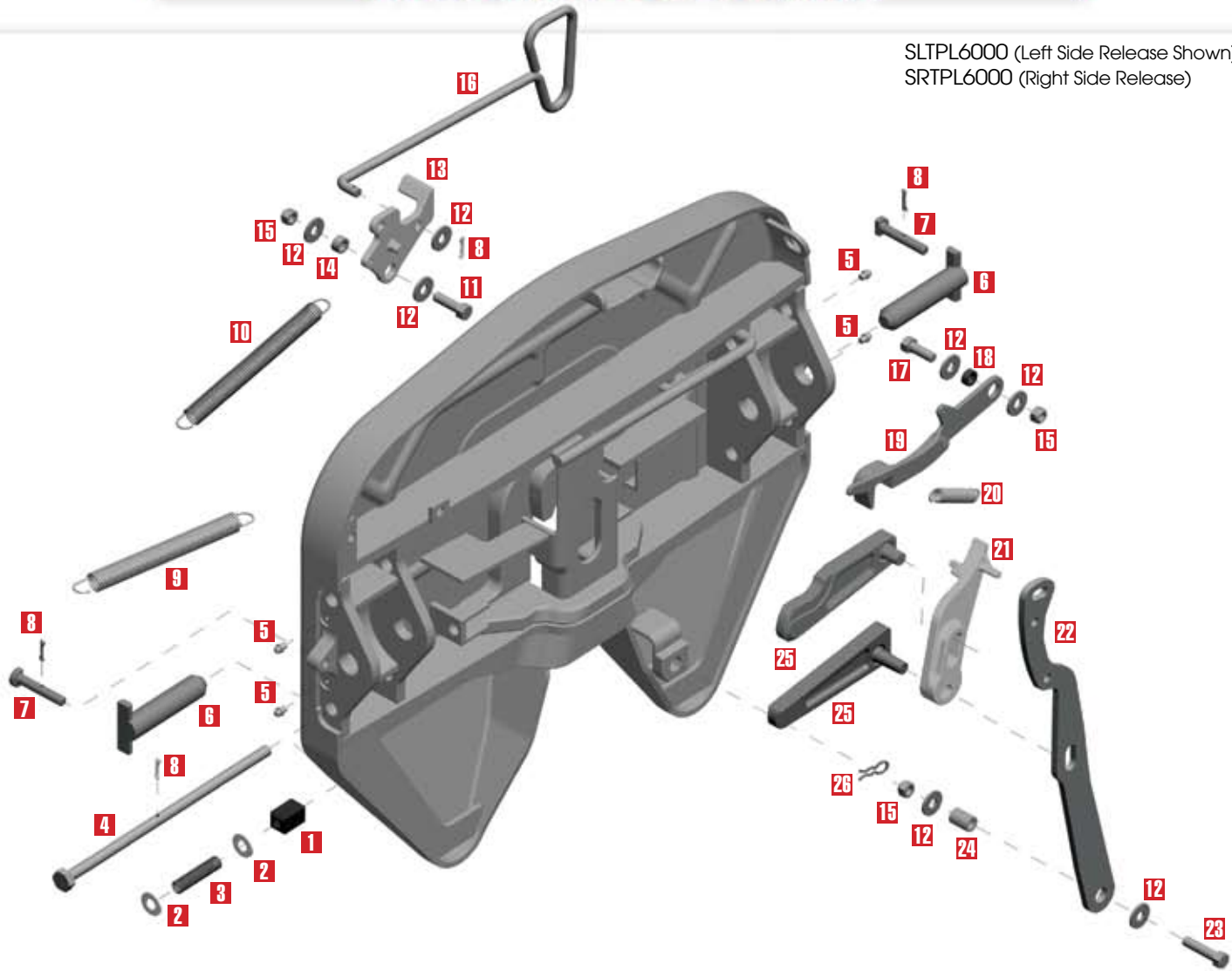


SLTPL6000 Model



6000 SERIES TOP PLATE

SLTPL6000 (Left Side Release Shown)
SRTPL6000 (Right Side Release)



Item	Description	Part No.	(Quantity)	Item	Description	Part No.	(Quantity)
1	Wedge Stop Rod Nut	NUT-319	(1)	14	Bushing, 7/16"	BSH-115	(1)
2	Flat Washer, 5/8", Plain	WSH-304-5	(2)	15	Hex Lock Nut, 1/2"-13, Grade "C"	NUT-303-9	(3)
3	Wedge Stop Rod Spring	SPR-317	(1)	16	Pull Handle	PUL-6000*	(1)
4	Wedge Stop Rod **	ROD-1108	(1)	17	Hex Head Bolt, 1/2"-13 x 1-3/4", Grade 5	BLT-302-14	(1)
5	Grease Fitting	MSC-375	(4)	18	Bushing, 5/16"	BSH-629	(1)
6	Bracket Pin	PIN-191P	(2)	19	Bumper	BPR-6000*	(1)
7	Bracket Retainer Pin	PIN-124P	(2)	20	Timer Spring	CD-SPR-236	(1)
8	Cotter Pin, 3/16" x 1"	PIN-165	(4)	21	Timer	TMR-6000*	(1)
9	Bumper Spring	SPR-374	(1)	22	Operating Handle	OPR-6000	(1)
10	Handle Spring	SPR-338	(1)	23	Hex Head Bolt, 1/2"-13 x 2-1/4", Grade 5	BLT-302-67	(1)
11	Hex Head Bolt, 1/2"-13 x 1-1/2", Grade 5	BLT-302-13	(1)	24	Bushing	BSH-1225	(1)
12	Flat Washer, 1/2" I.D., 1-3/8" O.D., Plain	WSH-304-4	(7)	25	Step Jaw and Wedge Set	WED-6000*	(1)
13	Secondary Lock	LAT-6000*	(1)	26	Hair Pin Cotter	PIN-336-1	(1)

* Specify left side (driver's side) or right side (curb side) release by adding an "L" or "R" after Part # (Example: KIT-RPR-6000L).

** Some custom ordered No-Slack® II Series Top Plate models use a knock out rod with no hex head or threads instead of a wedge stop rod as shown above – see **1**.



World Wide Headquarters • 5000 Grantswood Road • Suite 200 • Irondale, Alabama • 35210 • 800-874-9780 • Fax 205-421-4400

www.fifthwheel.com