

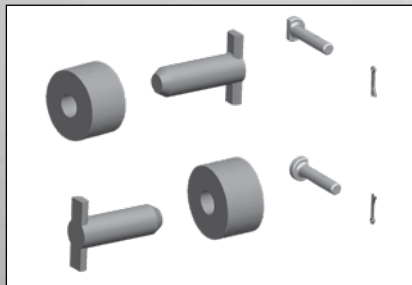
# Rebuild instructions for **CD700** **Custom Duty** top plate

Disassembly, assembly & troubleshooting  
instructions for custom duty series



## **KIT-RX-CD**

*Recommended kit for CD700 rebuild*



## **KIT-CD-PIN-224**

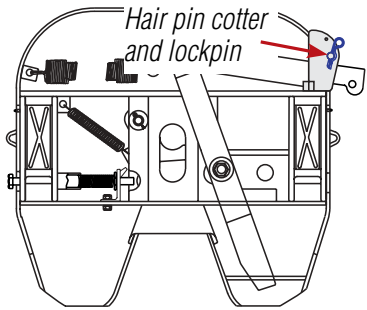
*Recommended bracket kit pin and  
bushing replacment*



  
**FONTAINE**<sup>®</sup>  
FIFTH WHEEL

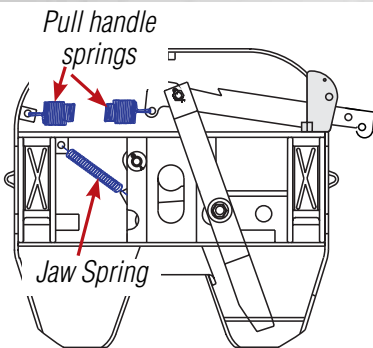
## CD-700 DISASSEMBLY

All parts are to be discarded after disassembly. Degrease fifth wheel before installing new parts. Refer to exploded view of assembly on last page to identify item numbers and parts. **Caution: Always wear safety glasses and do not stand directly over parts while disassembling or assembling wheel.**



**Step 1:** Set the fifth wheel in a locked position.

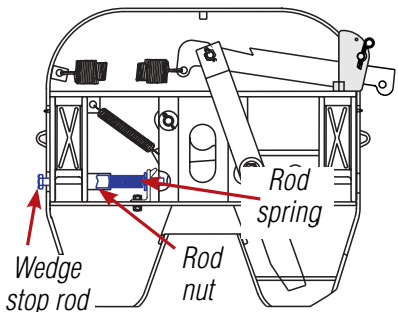
Remove the hair pin cotter and lock pin (items 7 & 8).



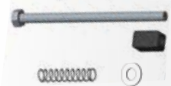
**Step 2:** Remove pull handle springs outer and inner (item 5 and 6).



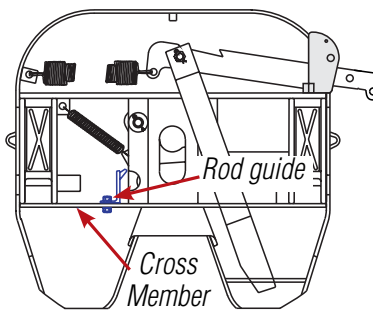
**Step 3:** Remove the jaw spring (item 4).



**Step 4:** Remove the wedge stop rod, nut and spring and washer (items 1, 2, 3 & 20).



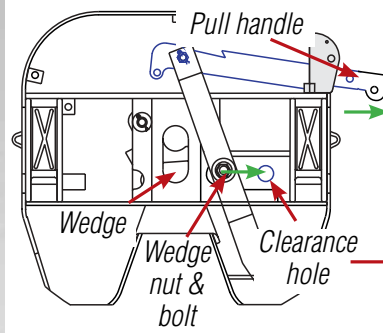
Wedge stop rod assembly



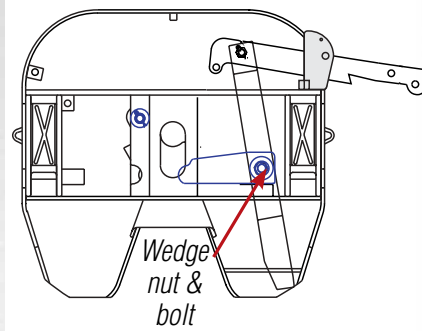
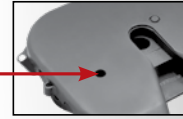
**Step 5:** Remove rod guide (item 26) and hardware (items 25 & 27).



Rod guide



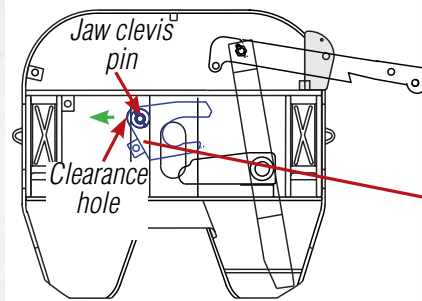
**Step 6:** Pull the pull handle out until wedge bolt aligns with clearance hole.



**Step 7:** Remove the flat head socket assembly (items 18, 16, 20, & 21) which attaches the operating handle 17 to the wedge (item 15).



Flat head socket assembly



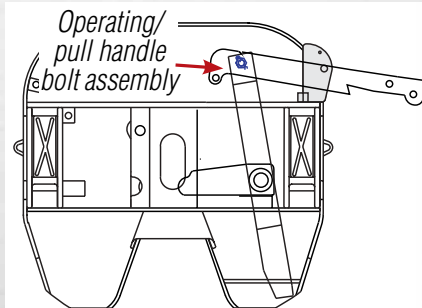
**Step 8:** Remove cotter pin 22, clevis pin 24 and washer 23 from jaw through clearance hole, and slide jaw 14 out.



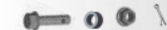
Clevis pin



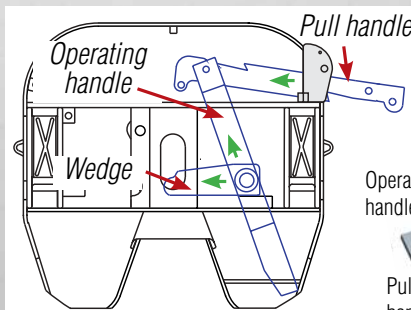
Jaw



**Step 9:** Remove cotter pin 22, bolt 13, bushing 12 and nut 19 from operating 17 and pull handle 11.



Hex head flange bolt assembly



**Step 10:** Remove operating handle 17, pull handle 11 and wedge 15.

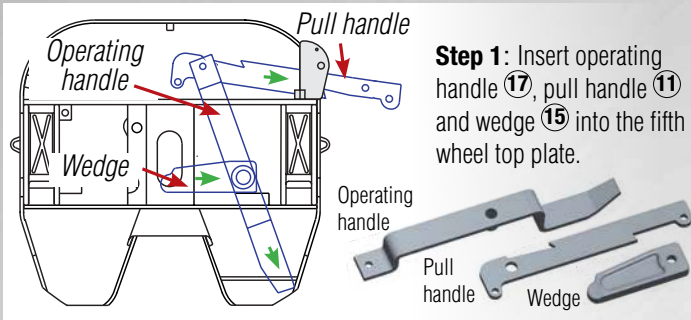
Operating handle

Pull handle

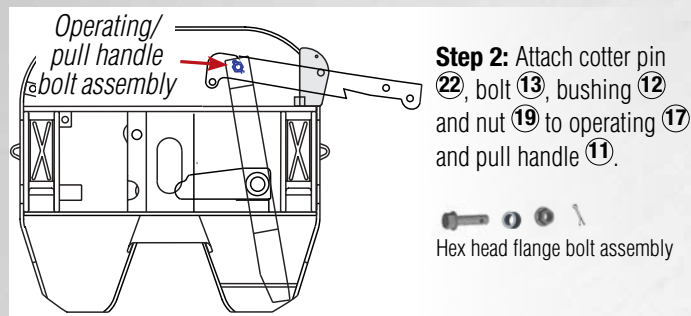
Wedge

## CD-700 ASSEMBLY

Before rebuilding the assembly, check to make sure that there are no cracks in the cross members or other components. Also check bracket pin holes to ensure they are not worn oversize (pins should fit snugly). Under no circumstances should a fifth wheel be repaired or used if any component (cross member, saddle bearing, etc.) is cracked.

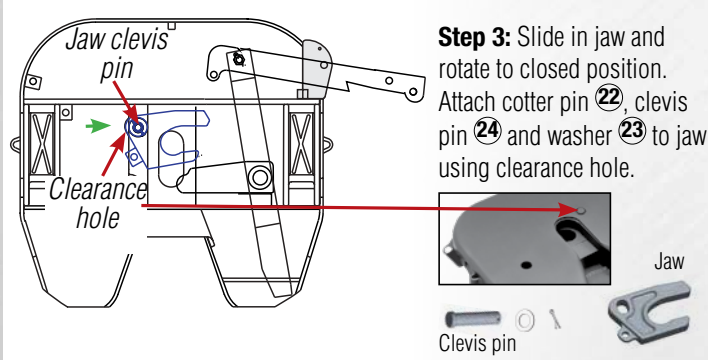


**Step 1:** Insert operating handle (17), pull handle (11) and wedge (15) into the fifth wheel top plate.



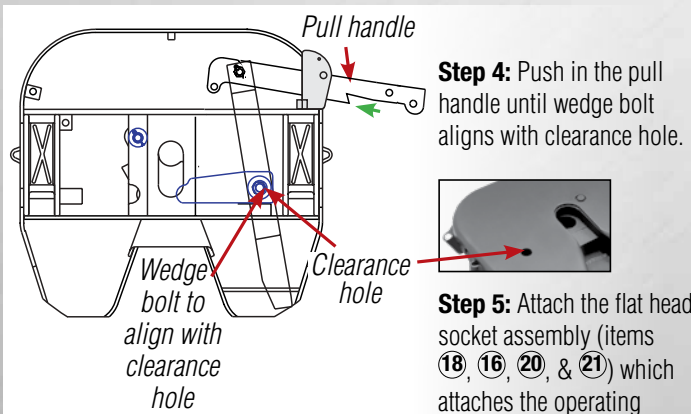
**Step 2:** Attach cotter pin (22), bolt (13), bushing (12) and nut (19) to operating (17) and pull handle (11).

Hex head flange bolt assembly



**Step 3:** Slide in jaw and rotate to closed position. Attach cotter pin (22), clevis pin (24) and washer (23) to jaw using clearance hole.

Clevis pin

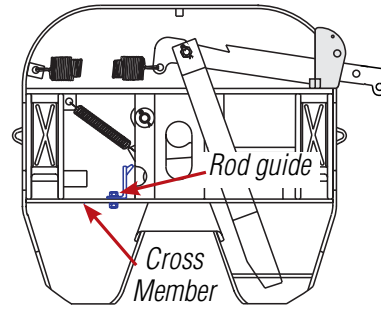


**Step 4:** Push in the pull handle until wedge bolt aligns with clearance hole.

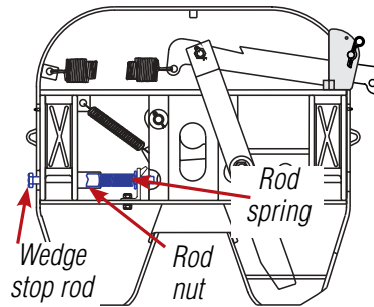


**Step 5:** Attach the flat head socket assembly (items 18, 16, 20, & 21) which attaches the operating handle (17) to the wedge (item 15).

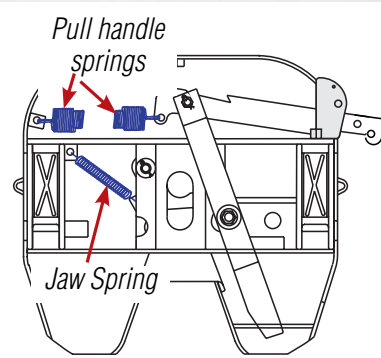
Flat head socket assembly



**Step 6:** Attach rod guide (item 26) and hardware (items 25 & 27). **DO NOT OVER TIGHTEN BOLTS. LUBRICATE ALL PIVOT POINTS**

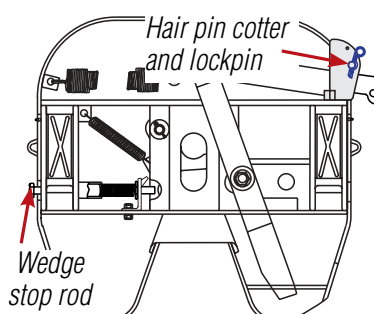


**Step 7:** Attach the wedge stop rod, nut and spring and washer (items 1, 2, 3 & 20).



**Step 8:** Attach the jaw spring (item 4).

**Step 9:** Attach pull handle springs outer and inner (item 5 and 6). It is easier to attach the double springs to the handle first and then the clip on fifth wheel housing.



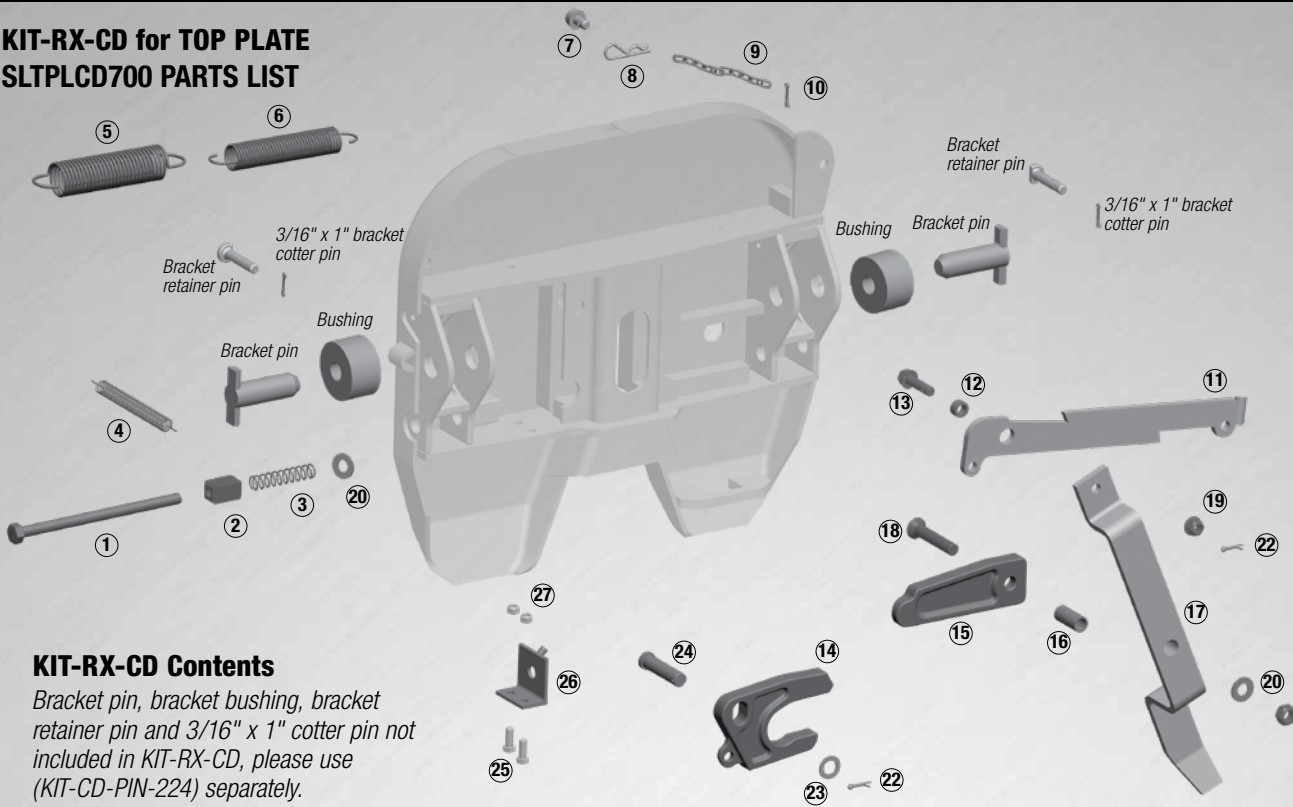
**Step 10:** Open the fifth wheel, insert a 2" king pin and close fifth wheel. Adjust the wedge stop rod to 3/8" from the end of the wedge. Open and close at least twice. Wheel should operate freely and smoothly without binding or interference. **AFTER COUPLING TO A TRAILER OR TO A 2" KING PIN INSERT THE LOCK PIN (7) AND SECURE WITH HAIR PIN COTTER (8).**



**Under no circumstances should a fifth wheel be repaired or used if any component (cross member, saddle bearing, etc.) is cracked.**



**KIT-RX-CD for TOP PLATE  
SLTPLCD700 PARTS LIST**



**KIT-RX-CD Contents**

Bracket pin, bracket bushing, bracket retainer pin and 3/16" x 1" cotter pin not included in KIT-RX-CD, please use (KIT-CD-PIN-224) separately.

Item	Description	Quantity
①	Wedge-stop rod	1
②	Wedge-stop rod nut	1
③	Wedge-stop rod spring	1
④	Jaw spring	1
⑤	Pull handle spring 6.7" x 1.8"	1
⑥	Pull handle spring 6.75" x 1.35"	1
⑦	Handle lock pin	1
⑧	Hairpin cotter	1
⑨	Chain	1
⑩	Cotter pin, 3/16" x 1"	1
⑪	Pull handle	1
⑫	Bushing, 7/16"	1
⑬	Hex head flanged bolt, nut	1
⑭	Jaw	1
⑮	Wedge	1
⑯	Bushing	1
⑰	Operating handle	1
⑱	Flat head socket, 5/8"-11 x 3-1/2"	1
⑲	Flanged Hex Locknut 1/2" - 13	1
⑳	Flat washer, 5/8", plain	1
㉑	Hex lock nut, 5/8" -11, grade "B"	1
㉒	Cotter pin, 5/32" x 1"	2
㉓	Flat washer 3/4", plain	1
㉔	Clevis pin, 3/4" x 3"	1
㉕	Flat head bolt, 5/8-11 x 3-1/2"	2
㉖	Rod guide	1
㉗	Hex lock nut, 3/8"-16	2

**Troubleshooting**

Problem	Possible Cause	Remedy
Difficulty Coupling	1. Kingpin too high to trip latch.	1. Lower landing gear
	2. Damaged trailerplate or kingpin.	2. Check trailer plate for flatness. Check kingpin for squareness with trailer plate.
Excessive wear on fifth wheel top plate	1. Damaged trailer plate.	1. If trailer plate is not flat – replace it.
Difficulty uncoupling	1. Pressure on locking mechanism caused by truck drifting apart from trailer putting excess pressure on lock	1. Back up tractor and set brakes. Strike the knock-out rod which protrudes through the side of the fifth wheel. This spring loaded rod will release the pressure on the locking mechanism.
	2. Oval-shaped kingpin	2. Replace trailer kingpin
	3. Debris build-up in the grease	3. Clean fifth wheel
Slack	1. Undersized kingpin	1. Replace kingpin if worn greater than 3 mm (1/8") at 5 m (2") diameter.
	2. Worn jaw and wedge	2. Jaw and wedge could have excessive wear. Replace.



Scan with your mobile device or search "CD" at [fifthwheel.com](http://fifthwheel.com) for more information.



[www.fifthwheel.com](http://www.fifthwheel.com) • 800-874-9780 • Email: [parts@fifthwheel.com](mailto:parts@fifthwheel.com)

©2017 Fontaine Fifth Wheel • LT-006 • August 2018 R2

@FifthWheelParts



@FontainePartsConnection

