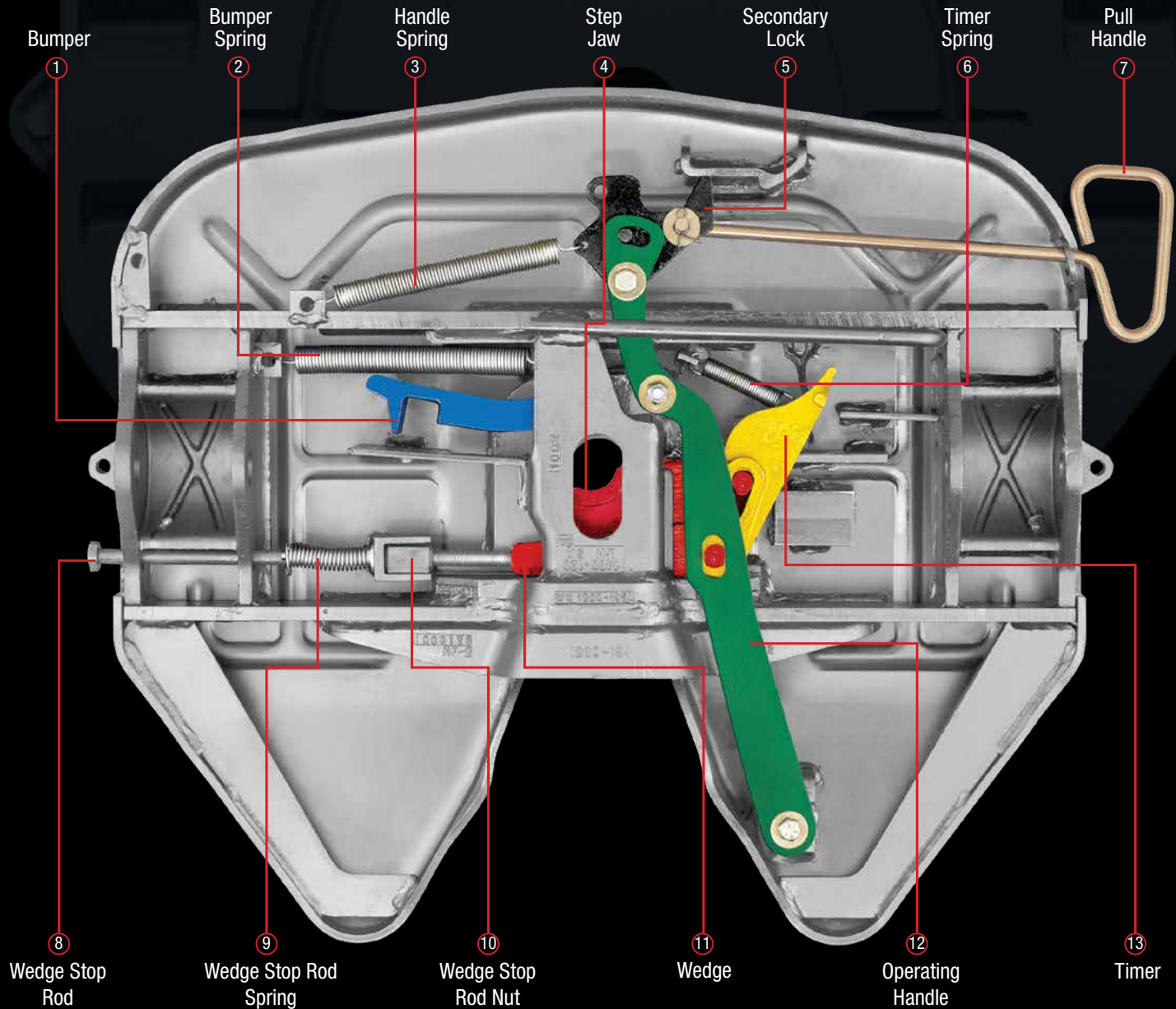


FONTAINE

Parts Guide for Fontaine® No-Slack® 6000, 7000, 7000CC and NT Series Fifth Wheels



Left hand SLTPL6000 model shown

Description	Part Number	Fits	Weight (lbs)	Contains
Repair Kit	KIT-RPR-6000*	6000,7000,7000CC,NT,H7	8	②③④⑥⑩
Rebuild Kit (Driver Side)	KIT-RX-67NLT	6000,7000,7000CC,NT	23	All
Rebuild Kit (Passenger)	KIT-RX-67NTR	6000,7000,7000CC,NT	23	All
Pull Handle	KIT-PUL-6000*	6000,7000,7000CC,NT	2.2	⑦
Pull Handle H7	KIT-PUL-H7	H7	2.2	⑦
Operating Handle	KIT-OPR-6000	6000,7000,7000CC,NT	5.2	⑫
Operating Handle H7	KIT-OPR-H7	H7	5.2	⑫
Timer Kit (Driver Side)	KIT-TMR-6000L	6000,7000,7000CC,NT,H7	3.4	⑬⑥
Adjustment Rod Kit	KIT-ROD-1108	6000,7000,7000CC,NT,H7	1.5	⑧⑨⑩
Bumper Kit (Driver Side)	KIT-BPR-6000L	6000,7000,7000CC,NT,H7	3.7	①②
Spring Kit	KIT-SPRING	6000,7000,7000CC,NT,H7	1.1	②③⑥
Replacement top plate	SLTPL7000	6000,7000	246	Complete
Replacement top plate	SLTPL6000	6000	205	Complete
Replacement top plate	SLTPLUNT	NT,LT,3000,4000	220	Complete

Part numbers that start with "KIT" include installation hardware.

* Part can be a L (left) or R (right).

FONTAINE
FIFTH WHEEL®

No-Slack® NT/6000/7000/7000CC

No-Slack® Top Plate Kits

Repair

Repair kit (KIT-RPR-6000L or R)

Item	Description	Qty.
6	Bumper spring	1
7	Handle spring	1
17	Timer spring	1
21	Step jaw	1
22	Wedge	1
10	Bushing, 7/16"	1
15	Bushing, 5/16"	1
19	Bushing, 1 1/4"	1
12	Hex lock nut, 1/2" - 13	3

Spring kit (KIT-SPRING)*

6	Bumper spring	1
7	Handle spring	1
17	Timer spring	1

Wedge-stop rod kit (KIT-ROD-1108)*

1	Wedge-stop rod nut	1
2	Flat washer, 5/8" I.D.	2
3	Wedge-stop rod spring	1
4	Wedge-stop rod	1
5	Cotter pin, 3/16" x 1"	1

Secondary lock kit (KIT-LAT-6000L)

7	Handle spring	1
8	Hex head bolt, 1/2" - 13	1
9	Flat washer, 1/2" I.D.	2
10	Bushing, 7/16"	1
11	Secondary lock	1
12	Hex lock nut, 1/2" - 13	1
5	Cotter pin, 3/16" x 1"	1

Pull handle kit (KIT-PUL-6000L or R)

13	Pull handle	1
14	Flat washer, 1/2" I.D.	1
5	Cotter pin, 3/16" x 1"	1

Bumper kit (KIT-BPR-6000L)

12	Hex lock nut, 1/2" - 13	1
14	Flat washer, 1/2" I.D.	2
15	Bushing	1
8	Hex head bolt, 1/2" - 13	1
16	Bumper	1
6	Bumper spring	1

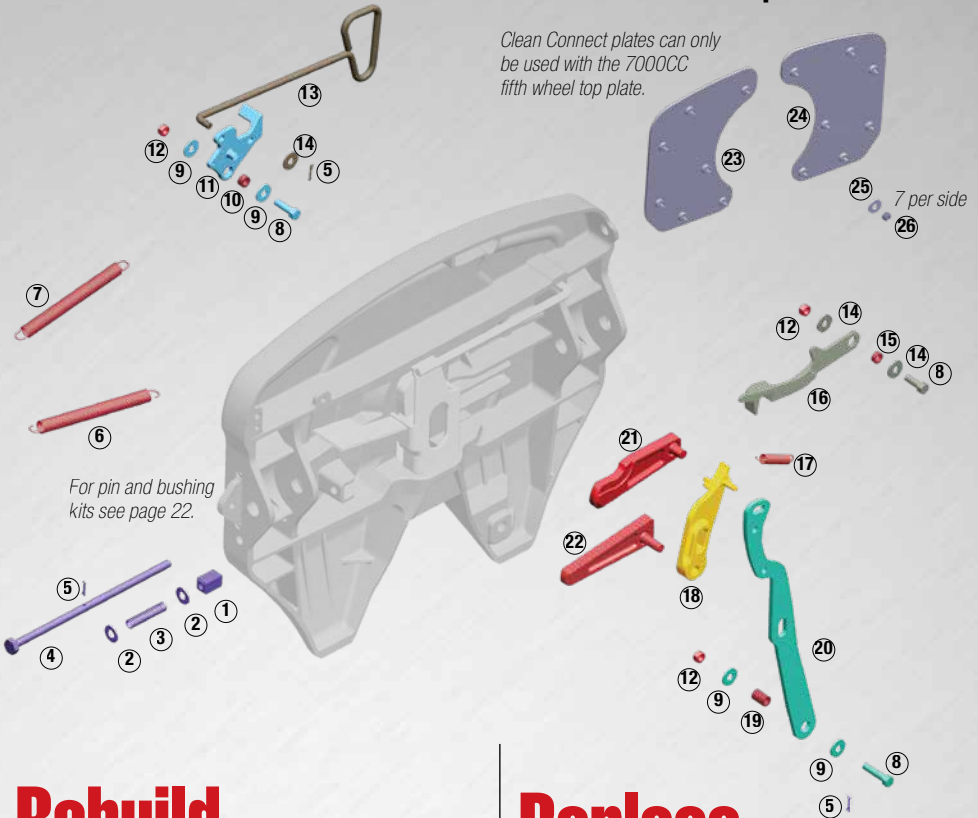
Timer kit (KIT-TMR-6000L)

17	Timer spring	1
18	Timer	1
12	Hex lock nut, 1/2" - 13	1
5	Hair pin cotter	1

Operating handle kit (KIT-OPR-6000)*

10	Bushing, 7/16"	1
15	Bushing, 5/16"	1
19	Bushing, 1 1/4"	1
12	Hex lock nut, 1/2" - 13	3
9	Flat washer, 1/2" I.D.	2
8	Hex head bolt, 1/2" - 13	1
20	Operating handle	1
5	Hair pin cotter	1

*Works for driver and passenger side models.



Rebuild

Part number: KIT-RX-67NTL

Major rebuild kit for **left side (driver) handle release NT/6000/7000/7000CC.**

Kit does not include bracket pins, bushings or Clean Connect plate kits.



Part number: KIT-RX-67NTR

Major rebuild kit for **right side (passenger) handle release NT/6000/7000/7000CC.**

Kit does not include bracket pins, bushings or Clean Connect plate kits.



7000CC Options

Clean Connect plate kits (7000CC)		
Item	Description	Qty.
(CCR-PLATES-R)		
23	Right CC plate	1
25	Flat washer	7
26	Hex lock nut	7
(CCR-PLATES-L)		
24	Left CC plate	1
25	Flat washer	7
26	Hex lock nut	7

Clean Connect plates can only be used with the 7000CC fifth wheel top plate.

Replace

Replace or upgrade your fifth wheel top plate.



SLTPL7000 (Driver side)
AATPL7000 (Air Actuated)

No-Slack® 7000 Cast

Rated for moderate duty on both on-highway and off-highway applications



SLTPL6000 (Driver side)
AATPL6000 (Air Actuated)

No-Slack® 6000 Stamped Steel

Rated for standard to moderate duty on-highway



SLTPL7000CC (Driver side)
AATPL7000CC (Air Actuated)

No-Slack® 7000CC Clean Connect Cast

Rated for moderate duty for on-highway applications

NT top plates have been discontinued, however, repair kits are still available.

For replacement, order 6000 assemblies with proper mount for your application.

For pin and bushing kits see pages 4.

Repair

No-Slack® NT/6000/7000/7000CC No-Slack® Top Plate Kits

Repair kit (Driver side: **KIT-RPR-6000L**, Passenger side: **KIT-RPR-6000R**)



Item	Qty.
Bumper spring	1
Handle spring	1
Timer spring	1
Step jaw	1
Wedge	1
Bushing, 7/16"	1
Bushing, 5/16"	1
Bushing, 1 1/4"	1
Hex lock nut, 1/2" - 13	3

Secondary lock kit (**KIT-LAT-6000L**)



Item	Qty.
Handle spring	1
Hex head bolt, 1/2" - 13	1
Flat washer, 1/2" I.D.	2
Bushing, 7/16"	1
Secondary lock	1
Hex lock nut, 1/2" - 13	1
Cotter pin, 3/16" x 1"	1

Pull handle kit (Driver side: **KIT-PUL-6000L**, Passenger side: **KIT-RPR-6000R**)



For H7 pull handle
see page 7.

Item	Qty.
Pull handle	1
Flat washer, 1/2" I.D.	1
Cotter pin, 3/16" x 1"	1

Timer kit (**KIT-TMR-6000L**)



Item	Qty.
Timer spring	1
Timer	1
Hex lock nut, 1/2" - 13	1
Hair pin cotter	1

Air actuated kit

Part number:
KIT-AA-6000L

Description	Quantity
① Air Cylinder with valve	1
② Springs	2
③ Clevis Pin 1/2" x 1"	1
④ Flat Washer 1/2"	2
⑤ Cotter Pin 5/32"	2
⑥ Quick Connect Valve	1



Wedge-stop rod kit (**KIT-ROD-1108**)



Item	Qty.
Wedge-stop rod nut	1
Flat washer, 5/8" I.D.	2
Wedge-stop rod spring	1
Wedge-stop rod	1
Cotter pin, 3/16" x 1"	1

Spring kit (**KIT-SPRING**)



Item	Qty.
Bumper/handle spring	2
Timer spring	1

Bumper kit (**KIT-BPR-6000L**)



Item	Qty.
Hex lock nut, 1/2" - 13	1
Flat washer, 1/2" I.D.	2
Bushing	1
Hex head bolt, 1/2" - 13	1
Bumper	1
Bumper spring	1

Operating handle kit (**KIT-OPR-6000**)



For H7 operating
handle see page 7.

Item	Qty.
Bushing, 7/16"	1
Bushing, 5/16"	1
Bushing, 1 1/4"	1
Hex lock nut, 1/2" - 13	3
Flat washer, 1/2" I.D.	2
Hex head bolt, 1/2" - 13	1
Operating handle	1
Hair pin cotter	1

Part number:
KITKPT



*Test kingpin is an excellent tool
for jaw and wedge adjustment.*

Pin and Bushing Kits

Bracket Pin and Bushing Kits

Bracket pin kit (KIT-PIN-LLB)



Item	Qty.
2-piece bushing	2 Pairs
Bracket pin	2
Bracket retainer pin	2
Cotter pin	2
Bracket liner	2

Bracket pin kit (KIT-PIN-191)



Item	Qty.
1-piece bushing	2
Bracket pin	2
Bracket retainer pin	2
Cotter pin	2

Bracket pin kit (KIT-PIN-UNT)



Item	Qty.
1-piece bushing	2
Bracket pin	2
Bracket retainer pin	2
Cotter pin	2
Bracket Liner	2

Bracket pin kit (KIT-PIN-3000)



Item	Qty.
Bracket liners	2
1-piece bushing	2
Bracket pin	2
Bracket retainer pin	2
Cotter pin	2

Bracket Pin and Bushing Kit Guide

Top Plate Mount	Top Plate	Bracket Pin Kit	Bushing Kit
Sliding Brackets			
ATB	6000, 7000, 7000CC	KIT-PIN-LLB	BSH-LLB
AWB	7000, H5092, H7	KIT-PIN-191	BSH-150
AWB Blocked BLAWB	7000, H5092, H7	KIT-PIN-191	BSH-150
AWX	H5092, H7	-	BSH-150
LWB	6000, 7000, 7000CC	KIT-PIN-LLB	BSH-LLB
LWO	NT, 3000	KIT-PIN-UNT*	-
MTB	6000, 7000, 7000CC	KIT-PIN-LLB	BSH-LLB
HDS & NHDS	7000, H7	KIT-PIN-HDLLB	BSH-HDLLB
HDI & NHDI	7000, H7	KIT-PIN-HDLLB	BSH-HDLLB
MWS	H5092, H7	KIT-PIN-191	BSH-150
NWB	6000	KIT-PIN-LLB	BSH-LLB
XPSA	X5092	-	BSH-150
ASB	NT, 3000	KIT-PIN-3000	-

Bracket Pin and Bushing Kits (Continued)

Bracket pin kit (KIT-PIN-HDLLB)



Item	Qty.
2-piece bushing	2 Pairs
Bracket pin	2
Bracket retainer pin	2
Cotter pin	2
Bracket liner	2

Bushing Kits

Bushing kit (BSH-HDLLB)



Item	Qty.
2-piece bushing	2 Pairs
Bracket liner	2

Bushing kit (BSH-LLB)



Item	Qty.
2-piece bushing	2 Pairs
Bracket liner	2

Bushing kit (BSH-150)



Item	Qty.
1-piece bushing	2

Top Plate Mount	Top Plate	Bracket Pin Kit	Bushing Kit
Fixed Mount/Plate Mount			
APB	NT, 3000	KIT-PIN-UNT*	-
BSL	6000, 7000, 7000CC	KIT-PIN-LLB	BSH-LLB
BSM	6000, 7000, 7000CC	KIT-PIN-LLB	BSH-LLB
FMA	6000, 7000, 7000CC	KIT-PIN-191	BSH-150
FMA D3	6000, 7000, 7000CC	KIT-PIN-191	BSH-150
PMA	6000, 7000, 7000CC	KIT-PIN-LLB	BSH-LLB
PML	6000, 7000, 7000CC	KIT-PIN-LLB	BSH-LLB
PSA	H5092, H7	KIT-PIN-191	BSH-150
PS5	H5092, H7	KIT-PIN-191	BSH-150
PS5 Blocked	H5092, H7	KIT-PIN-191	BSH-150
PMH and PMX	H7	KIT-PIN-HDLLB	-
PMH and PMX Blocked	H7	KIT-PIN-HDLLB	-
SMB	NT, 3000	KIT-PIN-UNT*	-
XPSA	X5092	-	BSH-150

*If 3000 Series top plate on the bracket or slide, use KIT-PIN-3000.



www.fifthwheel.com • 800-874-9780 • Email: parts@fifthwheel.com

* See your Fontaine Representative for application details or refer to Application Guide (LT-076) on website

©2022 Fontaine Fifth Wheel • LT-052 • December 2022 R5

